



Available Now!
Prius+ PHEV KIs
10% Off for EA
Members

EV INC.
y.com

H3CM

R01

6860-2201 J02
14011111111111111111

6860-2201 J02
14011111111111111111

6860-2201 J02
14011111111111111111

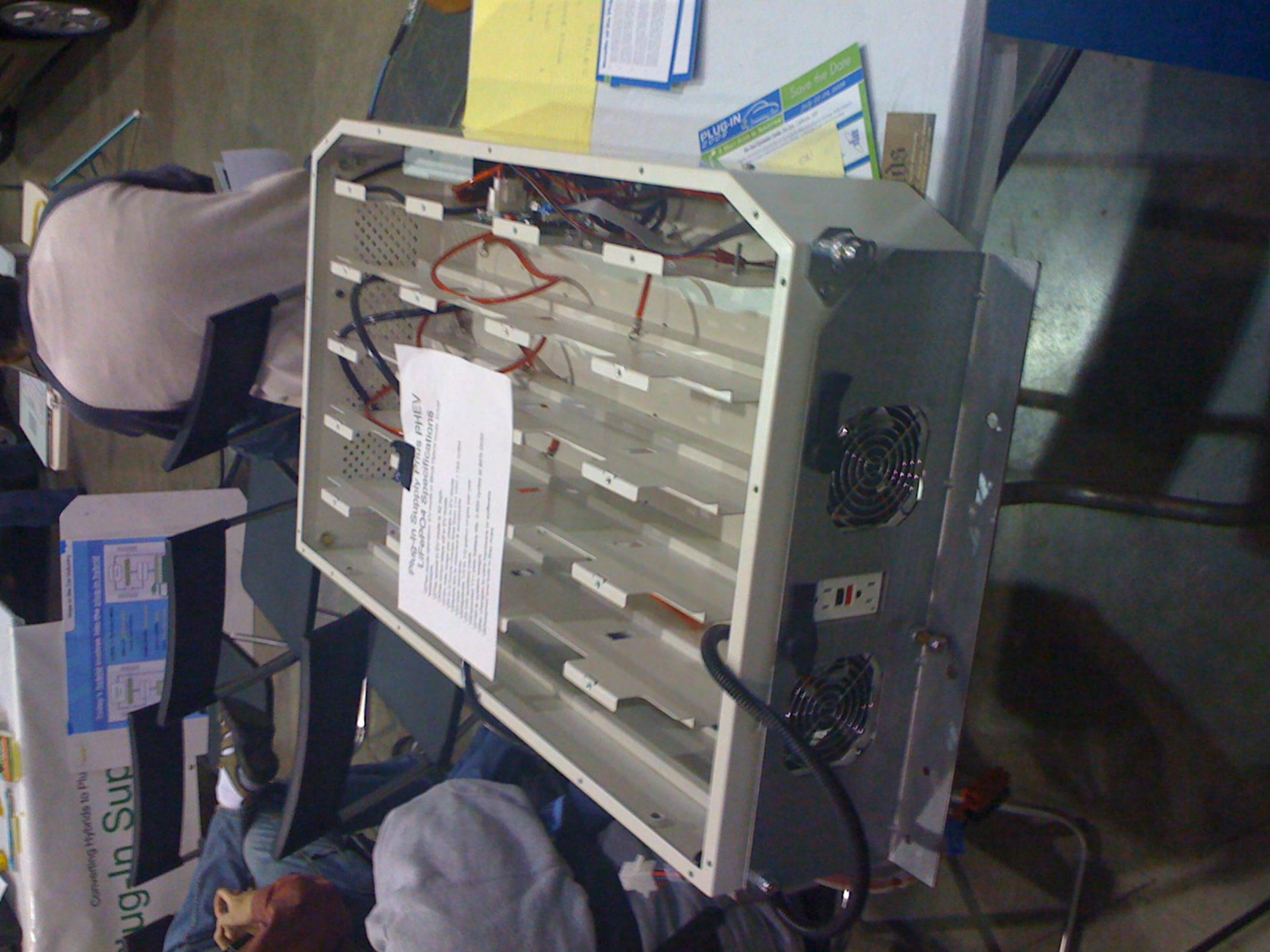
Converting Hybrids to Plug-In Hybrids
Plug-In Supply Inc.



PLUG-IN SUPPLY INC.
1000 W. 10th St.
Tulsa, OK 74103
918.438.1234
www.plug-insupply.com

PLUG-IN
Supply Inc.

1000



**Plug-In Supply Plus PHEV
LiFePO4 Specifications**

These specifications are for the Plug-In Supply Plus PHEV LiFePO4 battery pack. The battery pack is designed to provide power to the vehicle's electric motor and is rated for 100% depth of discharge (DoD). The battery pack is composed of 100 cells, arranged in 10 parallel strings of 10 cells each. The cells are connected in series to provide a total voltage of 360V. The battery pack is designed to provide a maximum current of 100A and is rated for a maximum power output of 36kW. The battery pack is designed to provide a maximum energy output of 10kWh. The battery pack is designed to provide a maximum range of 100 miles. The battery pack is designed to provide a maximum charging rate of 100A. The battery pack is designed to provide a maximum charging time of 10 hours. The battery pack is designed to provide a maximum operating temperature of 40°C. The battery pack is designed to provide a maximum storage temperature of 25°C. The battery pack is designed to provide a maximum shelf life of 10 years. The battery pack is designed to provide a maximum cycle life of 1000 cycles. The battery pack is designed to provide a maximum safety rating of UL 9540. The battery pack is designed to provide a maximum safety rating of UL 1973. The battery pack is designed to provide a maximum safety rating of UL 1974. The battery pack is designed to provide a maximum safety rating of UL 1975. The battery pack is designed to provide a maximum safety rating of UL 1976. The battery pack is designed to provide a maximum safety rating of UL 1977. The battery pack is designed to provide a maximum safety rating of UL 1978. The battery pack is designed to provide a maximum safety rating of UL 1979. The battery pack is designed to provide a maximum safety rating of UL 1980. The battery pack is designed to provide a maximum safety rating of UL 1981. The battery pack is designed to provide a maximum safety rating of UL 1982. The battery pack is designed to provide a maximum safety rating of UL 1983. The battery pack is designed to provide a maximum safety rating of UL 1984. The battery pack is designed to provide a maximum safety rating of UL 1985. The battery pack is designed to provide a maximum safety rating of UL 1986. The battery pack is designed to provide a maximum safety rating of UL 1987. The battery pack is designed to provide a maximum safety rating of UL 1988. The battery pack is designed to provide a maximum safety rating of UL 1989. The battery pack is designed to provide a maximum safety rating of UL 1990. The battery pack is designed to provide a maximum safety rating of UL 1991. The battery pack is designed to provide a maximum safety rating of UL 1992. The battery pack is designed to provide a maximum safety rating of UL 1993. The battery pack is designed to provide a maximum safety rating of UL 1994. The battery pack is designed to provide a maximum safety rating of UL 1995. The battery pack is designed to provide a maximum safety rating of UL 1996. The battery pack is designed to provide a maximum safety rating of UL 1997. The battery pack is designed to provide a maximum safety rating of UL 1998. The battery pack is designed to provide a maximum safety rating of UL 1999. The battery pack is designed to provide a maximum safety rating of UL 2000.

PLUG-IN
Save the Date
2012-2013

Plug-In Supply Plus PHEV LiFePO4 Specifications

Converting Hybrids to Plug-In Supply Plus PHEV LiFePO4 Specifications

Connecting Hybrids to Plu
Plug-In Sup
Solutions

Today's hybrid vehicles use the plug-in hybrid



PLUG-IN HYBRID VEHICLE



Plug-In System Power MHEV
Lithium-Ion Storage

PLUG-IN HYBRID VEHICLE

Today's hybrid vehicles use the plug-in hybrid

PLUG-IN HYBRID VEHICLE

Save the Date

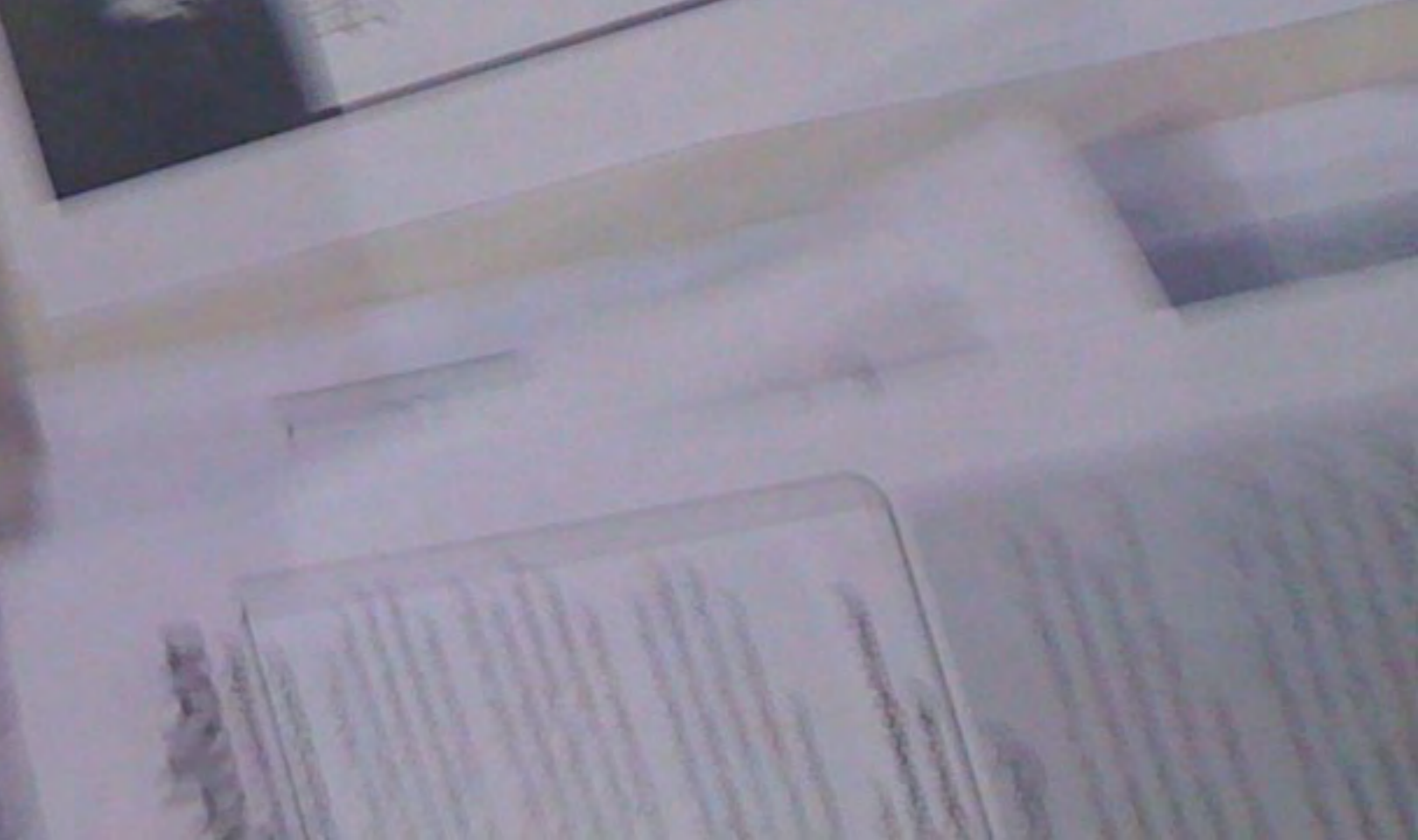
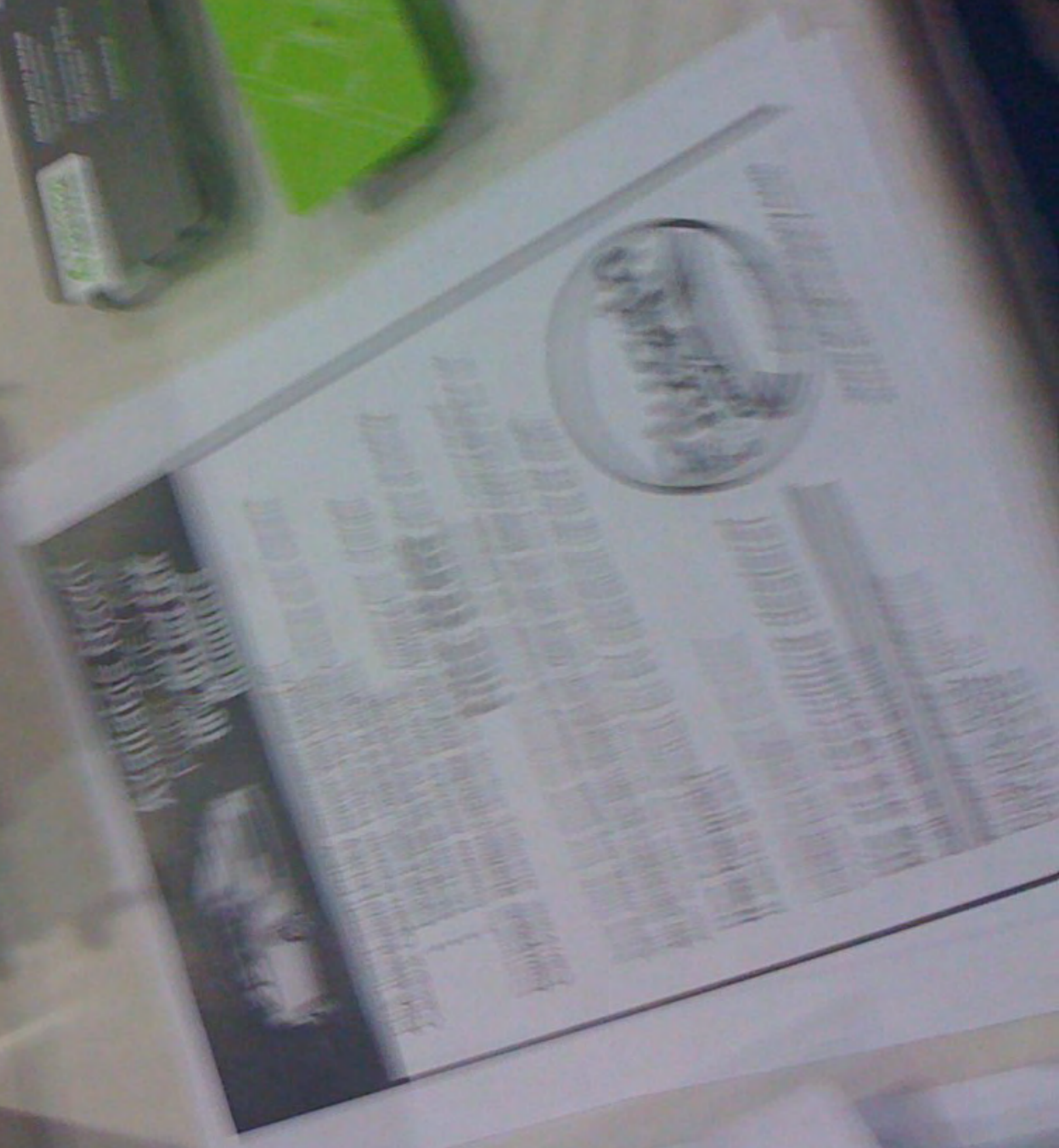
PLUG-IN HYBRID VEHICLE





ITEMS
THIS


BB
CARTERS
The Carters
11111
11111



on Grembon
Technical Lead

44 Creekside Court
Modena, CA 94575
voice/fax 877 482 8393
rgrembon@cs.cern.org

Dept
925
3993
@cern.org

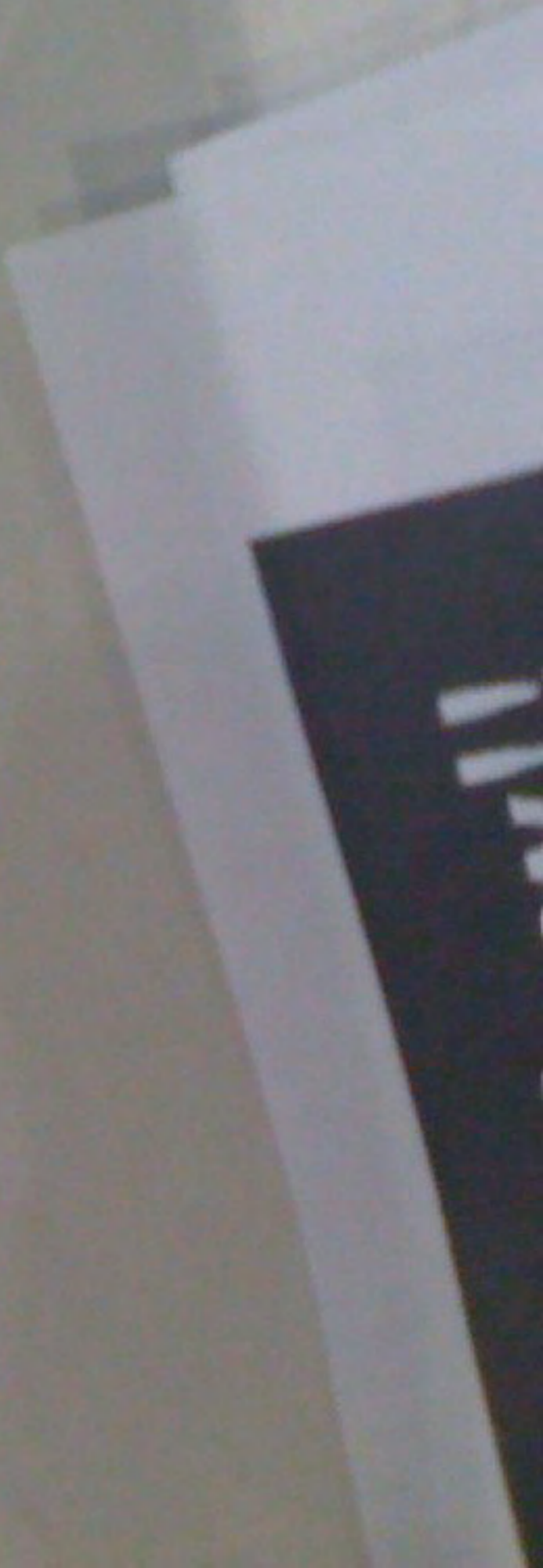
1-800-1-493-137




on Gremban
Technical Lead

44 Creekside Court
Modesto, CA 94725
voice/fax 877 452 5393
rgremban@edacem.org

1-800-1-286-104
4010



Plug-In Supply Prius PHEV LiFePO4 Specifications

- Q1 Two mode operation: EV mode or Block Hybrid mode. Driver selectable
- Q2 Top speed in EV mode is 82 mph
- Q3 Gas motor stays off in EV mode
- Q4 10 to 8 hours charge per charge in EV mode
- Q5 100 mile range in EV mode
- Q6 3 year warranty in EV mode & microcontroller
- Q7 1000 lbs auxiliary pack
- Q8 1000 lbs battery life 3,000 cycles at 80% DOD
- Q9 No changes to core hardware or software
- Q10 Designed and built in Bay Area

PLUG-IN 2008 Save the planet
Short Drive to Tomorrow
San Jose Convention Center, San Jose, California, CA
July 22-24, 2008
AVNET

akios
HIGH QUALITY PRINTERS
323 PERALTA, OAKLAND, CA 94607
800.228.6343 / 415.555.2014

Available Now
Plug-In PHEV 150
10% Off for LSA
Members

Plug-In Hybrid PHEV conversion based on
Current Gen Source Plug-In Technology

- Replaces original 12V battery with new
- Replaces alternator and battery
- 10 Year, 100,000 Mile Warranty
- Power windows to open lid

Complete system includes battery, battery box, charger
Cables, auxiliary display and new hardware

Price: \$5,895 plus shipping

See how for other companies please! See below

All generation system replaced with latest Gen 2 Gen 2 Gen 2
New models are Quality based with a plug-in system

New Feature! Switch for EV operation
It works great!

Understand the conversion process
before EV switch

We are recruiting dealers!
Call or email anytime

Register Today! Plug-In Supply Inc.
707 448-9322

Plug-In Supply
www.pluginsupply.com

Available Now
Plug-In PHEV 150
10% Off for LSA
Members

Plug-In Hybrid PHEV conversion based on
Current Gen Source Plug-In Technology

- Replaces original 12V battery with new
- Replaces alternator and battery
- 10 Year, 100,000 Mile Warranty
- Power windows to open lid

Complete system includes battery, battery box, charger
Cables, auxiliary display and new hardware

Price: \$5,895 plus shipping

See how for other companies please! See below

All generation system replaced with latest Gen 2 Gen 2 Gen 2
New models are Quality based with a plug-in system

New Feature! Switch for EV operation
It works great!

Understand the conversion process
before EV switch

We are recruiting dealers!
Call or email anytime

Register Today! Plug-In Supply Inc.
707 448-9322

Plug-In Supply
www.pluginsupply.com

Available Now
Plug-In PHEV 150
10% Off for LSA
Members

Plug-In Hybrid PHEV conversion based on
Current Gen Source Plug-In Technology

- Replaces original 12V battery with new
- Replaces alternator and battery
- 10 Year, 100,000 Mile Warranty
- Power windows to open lid

Complete system includes battery, battery box, charger
Cables, auxiliary display and new hardware

Price: \$5,895 plus shipping

See how for other companies please! See below

All generation system replaced with latest Gen 2 Gen 2 Gen 2
New models are Quality based with a plug-in system

New Feature! Switch for EV operation
It works great!

Understand the conversion process
before EV switch

We are recruiting dealers!
Call or email anytime

Register Today! Plug-In Supply Inc.
707 448-9322

Plug-In Supply
www.pluginsupply.com

Converting Hybrids to Plug-In Hybrids
Plug-In Supply Inc.
www.pluginsupply.com

PLEASE NO TOUCH





THIS PLUG-IN HYBRID GETS 10

Converting Hybrids to Plug-in Hybrids
Plug-In Supply Inc.
www.pluginsupply.com



100

THIS PLUG-IN HYBRID GETS

Plug-In Supply Inc.
Converting Hybrids to Plug-In Vehicles
www.plugin-supply.com

Plug-In Supply Inc.

PLEASE NO TOUCH



Available Now!!

Prius+ PHEV 1.8L

Member



Open Source Prius+ Technology.

- Future proof. Upgrade to LiFePO4 batteries when available.
- Reliable performance and durability.
- 10-15 miles All Electric Range.
- Provides access to spare tire.

Complete system includes batteries, battery box, charger, CanView, auxiliary display and wire harness.

Price: \$6,095 plus shipping.

Save more, buy some components yourself, like batteries.

4th generation system shipped with latest CalCars Basic Control board. Also accepts new Spooling Board. With it you can send CAN code to the car.

New Feature! Switch for EV operation up to 52 mph. It works great!

Installation not included. Instructions included. DIY friendly

We are recruiting dealers!

Call or email anytime.

Regards, Robb Protheroe
Plug-In Supply Inc
707 849-2422



www.pluginsupply.com





R01

48F 1K302-0949

48F 1K302-0949

48F 1K302-0949

TOUCH